



Brief introduction

- Unique shape, eye catching.
- Typical pole size, 240cm, 280cm, 320cm, 340cm, 380cm, 400cm, 450cm, 490cm, 590cm. Customized size is available.
- Both for indoor and outdoor use, portable instant signage.

Hardware

- Beachflag kit including enhanced aluminium pole, fiberglass pole, base (optional), printed banner, and oxford carrying bag.
- Enhanced 2 aluminium pole, with black powder coated 20mm diameter, 1.5mm thick, 15mm diameter, 1.0mm thick. Tapered fiberglass pole, excellent flexibility.
- Over 10 kinds of base optional. Like water tank base, corss base, flat crossbase, 4 leg base, metal plate base, ground screw base, ground spike base.
- Everything will be packed in an oxford carrying bag, easy to carry.



**Metal plate**

- Most stable base for indoor/outdoor use.
- Typical pole size, 30x30x0.5cm, 40x40x0.5cm, 50x50x0.5cm, 50x50x0.8cm, 55x55x0.8cm.
- Black/grey powder coated, anti-rust.
- Rotating pin or unrotating pin.

**Metal plate with handle**

- Most stable base for indoor/outdoor use.
- Typical pole size, 30x30x0.5cm, 40x40x0.5cm, 50x50x0.5cm, 50x50x0.8cm, 55x55x0.8cm.
- Black/grey powder coated, anti-rust.
- Rotating pin or unrotating pin.

**4 leg base**

- Base for indoor/outdoor use.
- Typical pole size, 85x85cm.
- Chrome coated in silver color.
- Leg withdrawable.
- Rotating pin.

**Flat cross base**

- Base for indoor/outdoor use.
- Typical pole size, 85x85cm.
- Warm grey powder coated.
- Leg foldable.
- Rotating pin or unrotating pin.

**Economic cross base**

- Base for indoor use, outdoor use (with water bag)
- Typical pole size, 82x72cm.z
- Warm grey powder coated.
- Leg foldable.
- Rotating pin or unrotating pin.



Metal ground spike

- Easy base for outdoor ground use.
- Typical pole size, 60cm.
- Chrome coated in silver color.
- Rotating pin.



Metal ground screw

- Most stable base for outdoor ground use.
- Typical pole size, 49cm.
- Black/grey powder coated, anti-rust.
- Rotating pin.



Plastic ground screw

- Economic base for outdoor ground use.
- Typical pole size, 58cm.
- Black/grey powder coated, anti-rust.
- Rotating pin or unrotating pin.



2 way water base

- Base for indoor/outdoor use. Can be 16KG with water filled.
- Typical pole size, 45x45cm.
- Black or grey color.
- 3 extended leg, to increase the stability. (optional)
- Rotating pin or unrotating pin.
- Flat round space for logo attaching

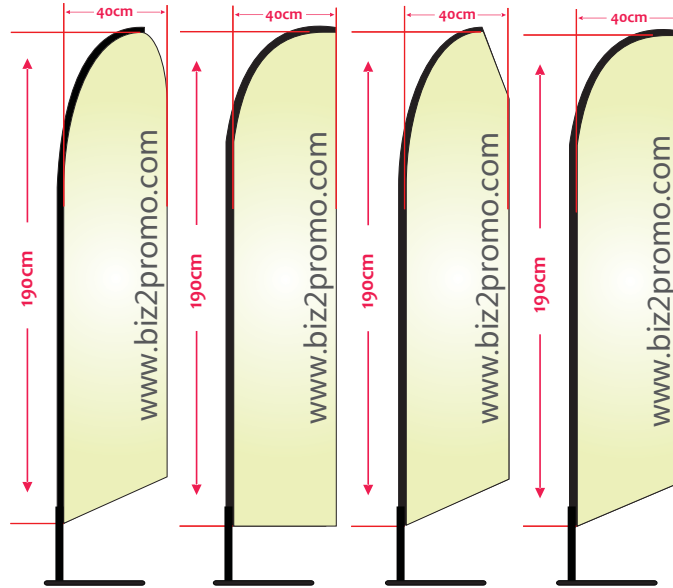
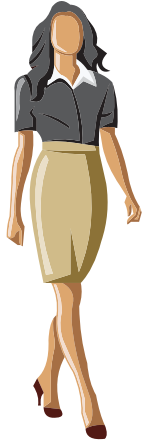


Water bag

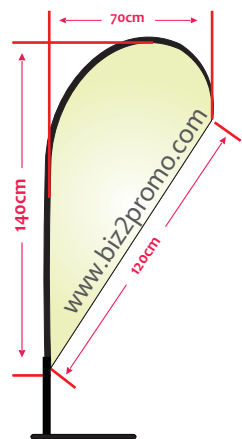
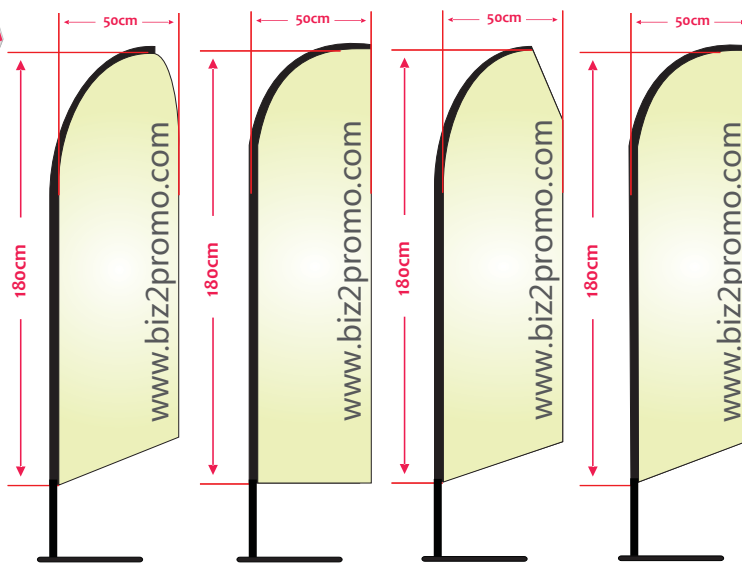
- Counter weight for cross base, flat cross base and 4 leg base.
- Typical pole size, 58cm diameter and 54cm diameter.
- Silver color.
- Can be used in hot and cold weather.

240cm pole

EYE CATCHING



EYE CATCHING

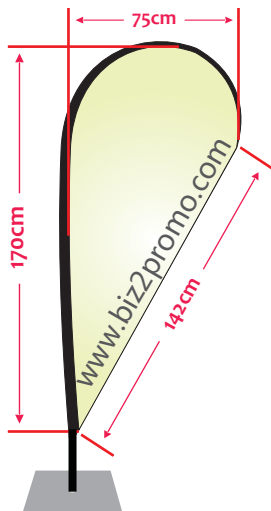
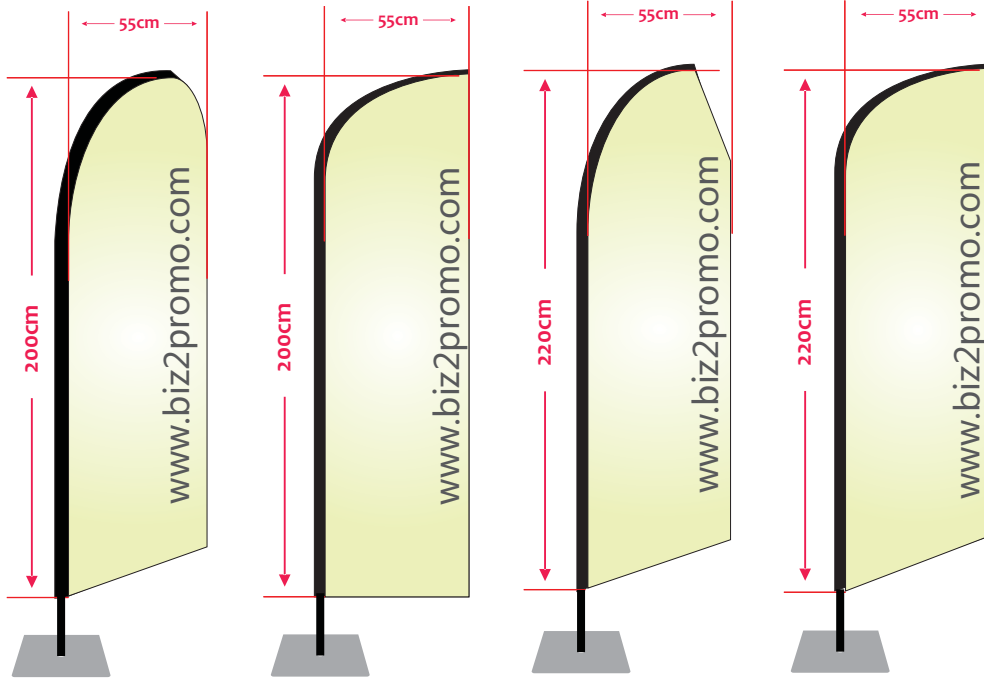
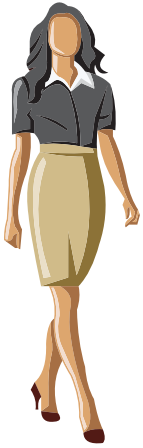


- Typical size, beachflag, sail flag, bowhead flag, flying banner, 40x190cm, 50x180cm.
- Typical size, teardrop banner, 70x140cm.
- Digital printed/slik screen printed graphic on high quality polyester fabric. Typical material, knitted polyester 110gr/sq.m Shiny knitted polyester 120gr/sq.m, mesh polyester 120gr.sq.m
- Double side printed on polyester, perfect color penetration.
- Double stitched edge.
- Vector printing data is needed, AI, EPS, PDF, CDR will be acceptable.
- Pantone color code, HKS color code is acceptable.



○ 280cm pole

EYE CATCHING

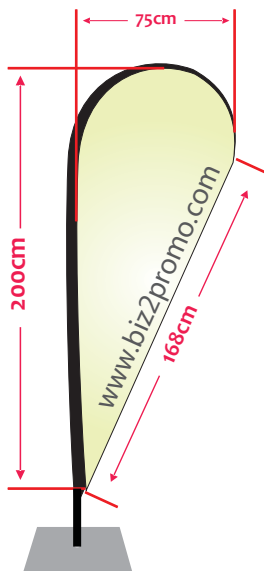
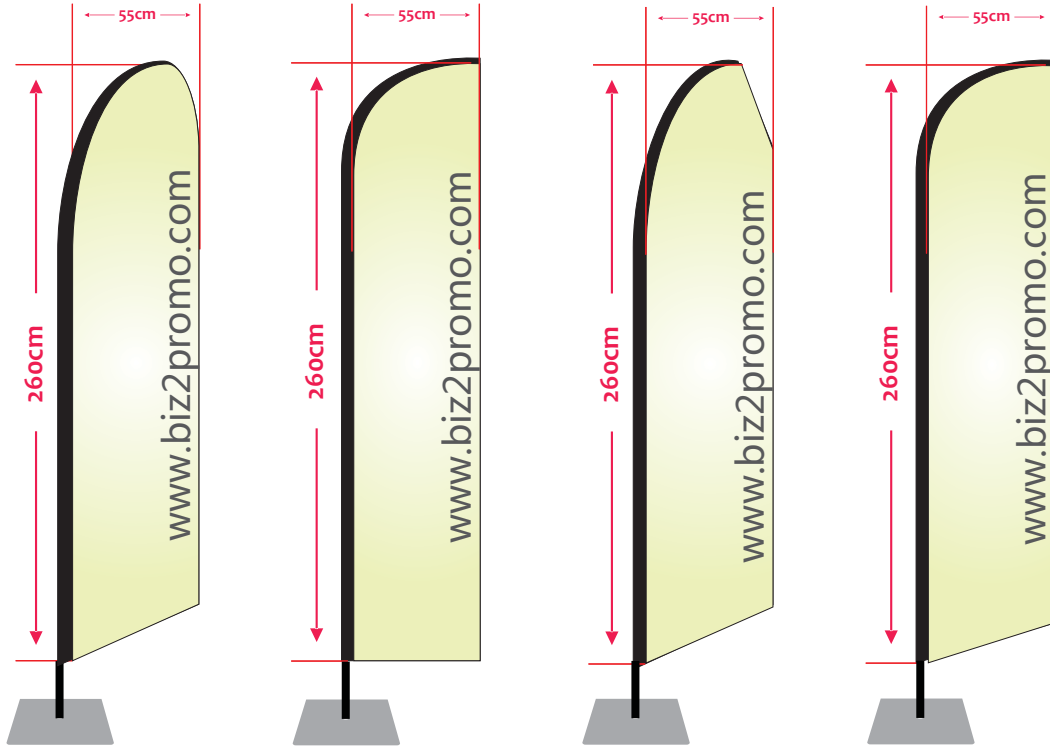
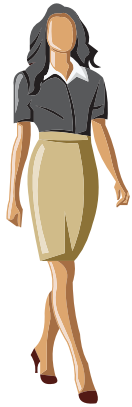


- Typical size, beachflag, sail flag, bowhead flag, flying banner, 55x220cm.
- Typical size, teardrop banner, 75x170cm.
- Digital printed/slik screen printed graphic on high quality polyester fabric. Typical material, knitted polyester 110gr/sq.m Shiny knitted polyester 120gr/sq.m, mesh polyester 120gr.sq.m
- Double side printed on polyester, perfect color penetration.
- Double stitched edge.
- Vector printing data is needed, AI, EPS, PDF, CDR will be acceptable.
- Pantone color code, HKS color code is acceptable.



320cm pole

EYE CATCHING

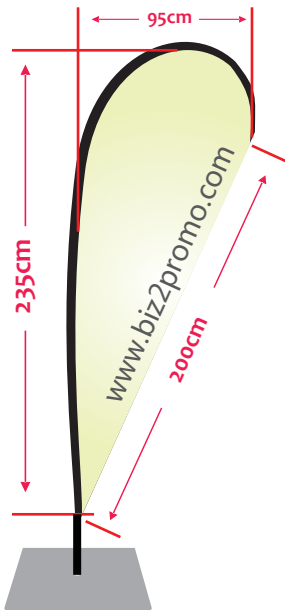
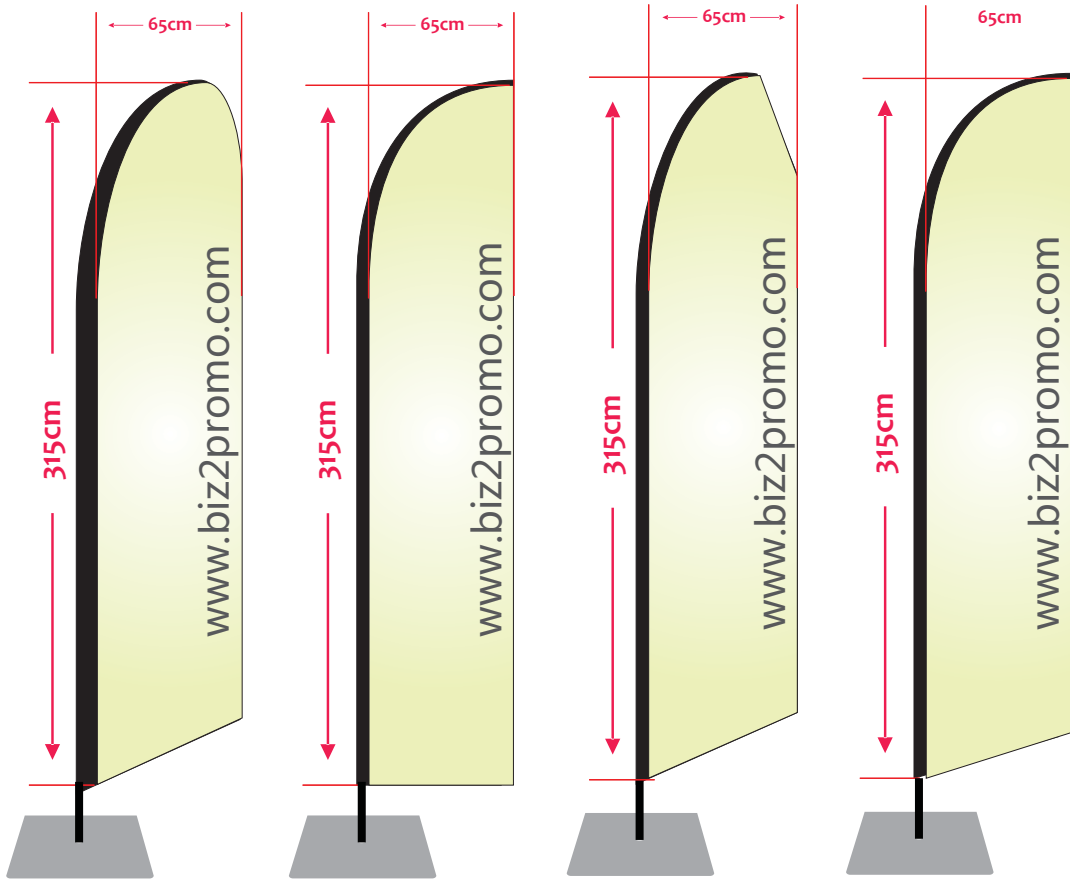
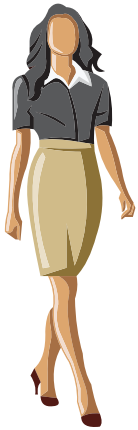


- Typical size, beachflag, sail flag, bowhead flag, flying banner, 55x260cm.
- Typical size, teardrop banner, 75x200cm.
- Digital printed/silk screen printed graphic on high quality polyester fabric. Typical material, knitted polyester 110gr/sq.m Shiny knitted polyester 120gr/sq.m, mesh polyester 120gr.sq.m
- Double side printed on polyester, perfect color penetration.
- Double stitched edge.
- Vector printing data is needed, AI, EPS, PDF, CDR will be acceptable.
- Pantone color code, HKS color code is acceptable.



380cm pole

EYE CATCHING

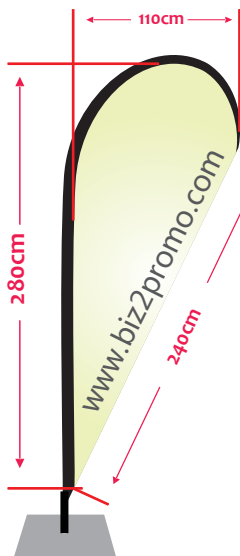
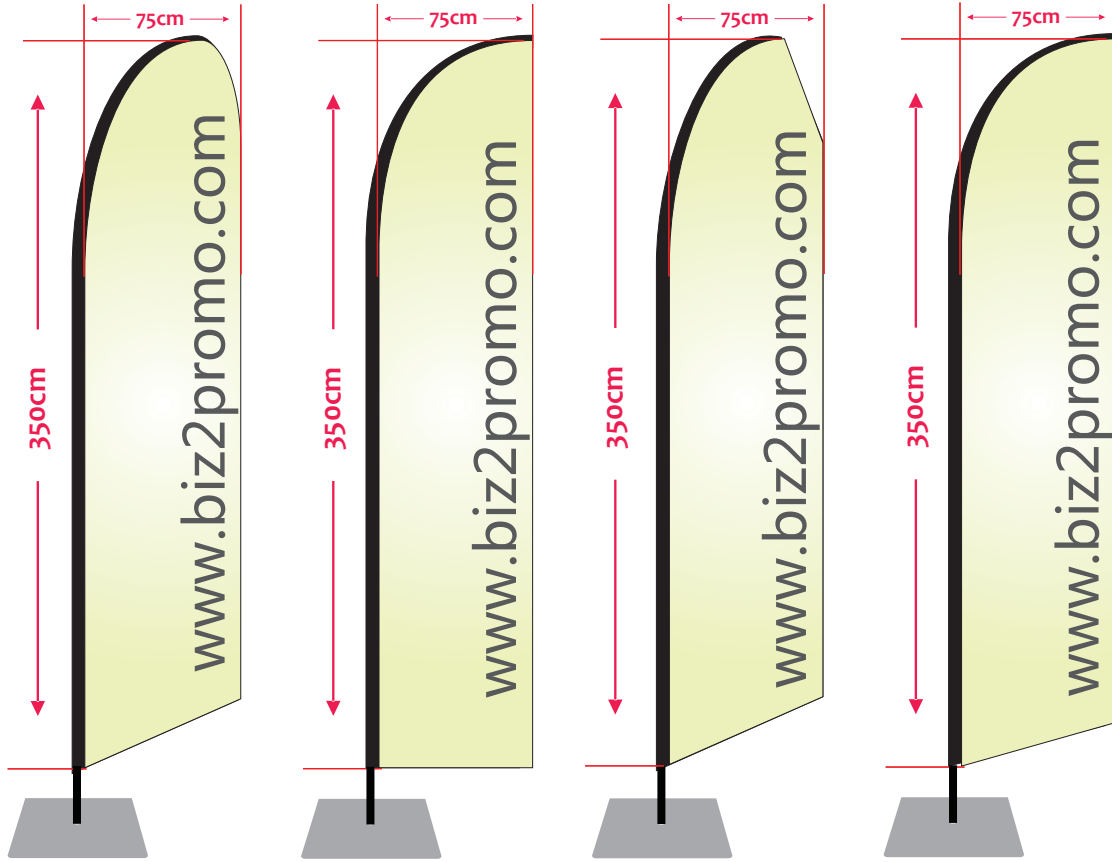
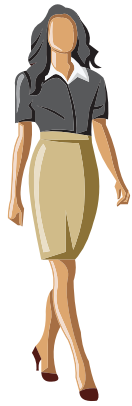


- Typical size, beachflag, sail flag, bowhead flag, flying banner, 65x315cm.
- Typical size, teardrop banner, 95x235cm.
- Digital printed/slik screen printed graphic on high quality polyester fabric. Typical material, knitted polyester 110gr/sq.m Shiny knitted polyester 120gr/sq.m, mesh polyester 120gr.sq.m
- Double side printed on polyester, perfect color penetration.
- Double stitched edge.
- Vector printing data is needed, AI, EPS, PDF, CDR will be acceptable.
- Pantone color code, HKS color code is acceptable.



450cm pole

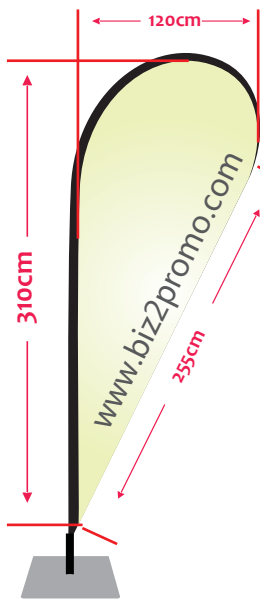
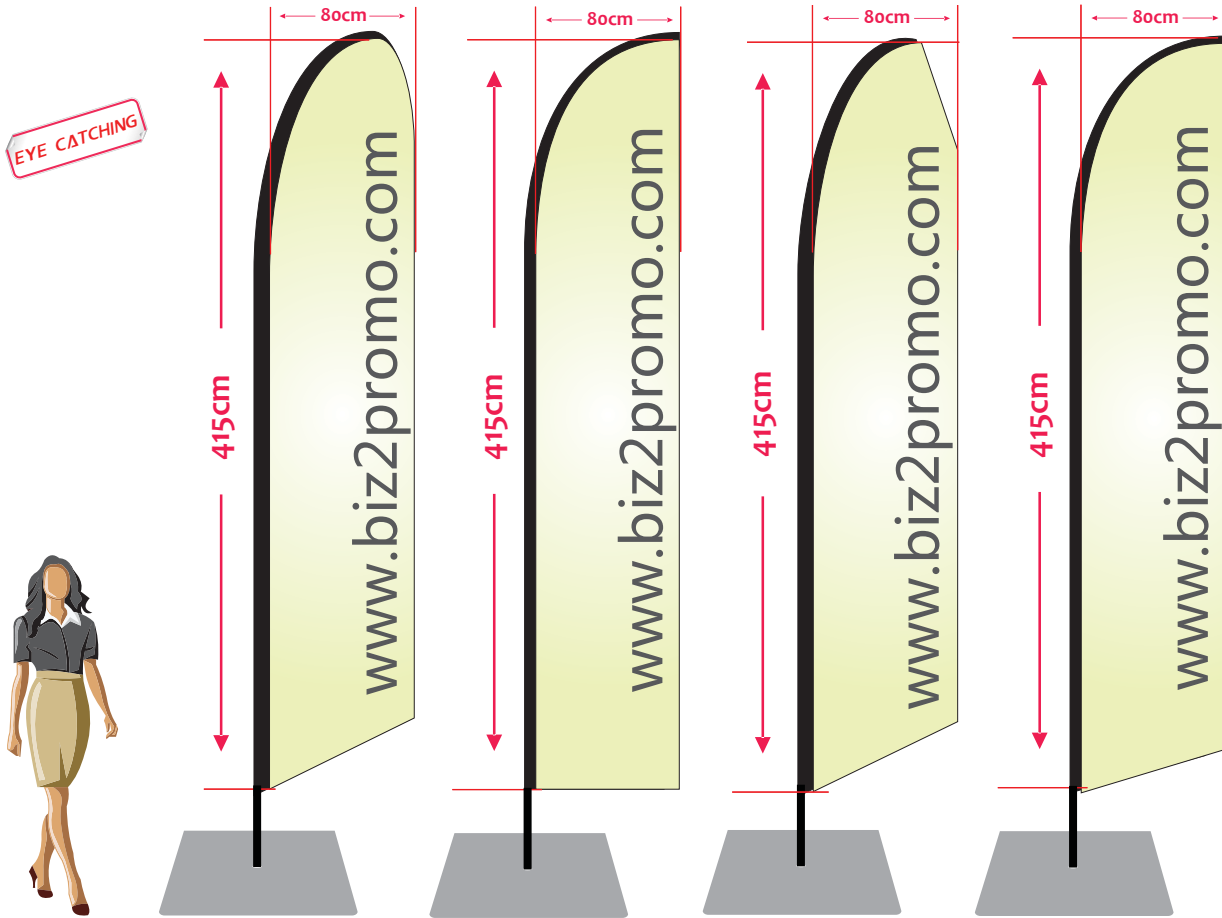
EYE CATCHING



- Typical size, beachflag, sail flag, bowhead flag, flying banner, 75x350cm.
- Typical size, teardrop banner, 110x280cm.
- Digital printed/slik screen printed graphic on high quality polyester fabric. Typical material, knitted polyester 110gr/sq.m Shiny knitted polyester 120gr/sq.m, mesh polyester 120gr.sq.m
- Double side printed on polyester, perfect color penetration.
- Double stitched edge.
- Vector printing data is needed, AI, EPS, PDF, CDR will be acceptable.
- Pantone color code, HKS color code is acceptable.



○ 490cm pole



- Typical size, beachflag, sail flag, bowhead flag, flying banner, 80x415cm.
- Typical size, teardrop banner, 120x310cm.
- Digital printed/silk screen printed graphic on high quality polyester fabric. Typical material, knitted polyester 110gr/sq.m Shiny knitted polyester 120gr/sq.m, mesh polyester 120gr.sq.m
- Double side printed on polyester, perfect color penetration.
- Double stitched edge.
- Vector printing data is needed, AI, EPS, PDF, CDR will be acceptable.
- Pantone color code, HKS color code is acceptable.

